



Whitby School
Ad finem terrae

SIXTH FORM PROSPECTUS





WELCOME

Whitby School Sixth Form is a new sixth form that is building on the existing reputation in Whitby for ambitious targets and excellent results both academically and personally.

At Whitby School Sixth Form we enable all our students to reach their full potential by providing a broad range of courses and opportunities. Students are able to study a range of courses including A-level and Level 3 BTEC and Cambridge National Vocational courses, we also offer a Level 2 vocational course and GCSE resits, along with our bespoke Foundation Learning programme. This means that students of all abilities can follow a pathway tailored to their individual aspirations and interests.

Every year, a number of students go on to study at top universities, take up places on apprenticeships with leading providers or take their next steps into full time employment.

Whitby's vibrant sixth form encourages students to immerse themselves not only in their academic studies but in the many enrichment opportunities on offer, helping them to develop new skills, interests and friendships.



Students enjoy outstanding facilities in all faculties as well as in the sixth form centre which has social and study areas as well as its own cafe area.

Pastoral support and expert guidance are on hand to help students settle into sixth form life and to plan the next stage of their journey.

At Whitby School Sixth Form, we are proud to offer a caring, supportive and high-achieving sixth form which enables all students to flourish and to develop the skills and confidence they need to in a fast paced and challenging world.



COURSES FOR ALL

Whitby School Sixth Form offers a broad range of courses at Level 3 to reflect the strengths and aspirations of all students. These include both A-level and Vocational qualifications. Whitby School Sixth Form prides itself on high standards of teaching and learning, our teachers combine many years' experience with the use of the latest technologies and creative teaching practices. All students are encouraged to be increasingly responsible for their own learning, helping them to develop the essential skills they need for university, apprenticeships or employment.

Finding and applying for Apprenticeships and Employment

Several of our students gained apprenticeships last year with local employers such as Anglo American.

Bursary funding to help with study costs

We can help with textbooks, specialist equipment and transport.

Help towards travel costs

Any students who need a school travel pass will receive help towards the cost of this pass.

Help to organise your studies

Your tutor will meet with you regularly, both in small groups and one-to-one sessions and help you to help yourself.

A personal development programme

We offer sessions on mental health awareness, personal safety and personal development throughout the year.

Expert university advice

Our UCAS team has a track record of helping students get on the courses they want including medicine, veterinary and Oxbridge.

Careers Guidance

As a Whitby School Sixth Form student, you will receive excellent guidance and support to help you to achieve success in your learning pathway. So, whether you require help in choosing the right course or advise about a particular career path, you will receive high quality guidance to support your individual needs. There will be opportunities to have mock interviews, a one-to-one careers meeting and expert support through the university application process or when applying for employment.



COURSES WE OFFER

A-levels

Fine Art

Biology

Chemistry

Drama

English Language

English Literature

Geography

History

Maths

Further Maths

German

French

Media Studies

Music

Philosophy and Ethics

Physics

Sociology

Level 3 BTEC/Cambridge Technical Courses

Business

Health and Social Care

Law

Psychology

Sport

Level 2 Courses

Business Enterprise

Hairdressing (This is a full time course including Maths and English GCSE if needed, in partnership with Malton Academy)

Level 1/Entry Level

Foundation Learning Programme





STUDENT LIFE

You can sign up for one of the following courses:

- Duke of Edinburgh Award
- MOOC (Massive Open Online Course)
- EPQ – Extended Project Qualification
- Student Leadership Team
- Teaching English as Foreign Language.

Work experience opportunities:

- KS3 mentoring including phonics teaching
- Student Leadership development
- extra-curricular club and activities
- self-supported work experience.

Fitness and Sport opportunities:

- sports teams' practises and matches
- discounted membership to Whitby Leisure Centre.

Mentoring - this will give you the opportunity to help mentor KS3/KS4 pupils. You will work closely with a set of pupils throughout the year to help them in their learning. You will receive training for this that will look excellent on any job or university application.

Work Experience - this will allow you to gain skills in the workplace of your choice. This is mainly for a job you are interested in and, if you are struggling to find a placement, there are people in the school who can help.

Sport and Fitness Ambassador - this will allow you to promote fitness around the school, officiate matches, run clubs and partake in sporting activities. This will improve your leadership, organisation and confidence skills.

Student Leaders - as a student leader you will help shape the future of the sixth form by reviewing policies such as uniform and the curriculum. As well as representing the sixth form at open evenings, you will help to organise charity events, student events and fundraising. This will be your opportunity to show your leadership abilities and will look excellent on any job or university application form.

Higher Education Days, UCAS and Careers Advice

Help, support and advice are available for students throughout the UCAS registration process for those applying to higher education.



We also arrange a visit to a UCAS conference so that you can find out more about university life and the full range of subjects available. A comprehensive range of resources are available to students wanting to research careers, higher education and gap year options, in the Learning Centre.

Duke of Edinburgh Award

All Year 12 students are encouraged to participate in the Duke of Edinburgh's Bronze Award or beyond. Since it began in 1956, the scheme has aimed to help young people plan and undertake different activities to develop them mentally, physically, emotionally and spiritually. It aims to provide young people with an enjoyable, challenging and rewarding programme of personal development of the highest quality and the widest reach. There are three levels to the award – bronze, silver and gold. Each level has four specific areas – service, skills, physical recreation and expeditions. The Duke of Edinburgh's Award is widely recognised by employers and people involved in education. Some of the benefits to young people include: developing self-confidence and self-reliance; gaining a sense of achievement and a sense of responsibility; discovering new skills, interests

and talents; developing leadership skills and abilities.

Driving

The Driving Standards Agency visits the school to help students to prepare for their driving tests and increase awareness of road safety. We also organise, through North Yorkshire Council, a set of workshops showing the effects of road accidents and the roles of the public services they affect, such as the Fire Brigade, Police and Ambulance services. It's a powerful workshop which carries a hard-hitting message.

Fund Raising

Fancy getting involved with raising money for charity? Sixth Form students have helped to generate significant sums of money through a range of fund raising activities at the school. Some interesting fancy dress costumes, coupled with jangling buckets usually dominates the proceedings! Last year, Sixth Form students helped to raise over £4000 for charities including: Children in Need, the Shoe Box Appeal, Help for Heroes, and many more. Ideas can also be put forward through the Student Leadership Team.





FREQUENTLY ASKED QUESTIONS

Q. How do I know which subjects to choose?

A. It is always best to choose those subjects that you enjoy and are likely to do well in. You also need to check that the subjects you choose will allow you to apply for the next course you want to do, either at College or University, or will be suitable for the job you want to apply for.

Q. Will I have a free choice of Level 3 courses?

A. Up to a point:

- if your grades at GCSE indicate that you would not pass a selected level three course, we will not recommend that you start it for your own sake. Mrs Mackle will be available to give you advice or assist you with an application to another provider.

Q. How do I know which are the best subjects to choose?

A. You need to start your research early, as many universities have highly-competitive entry criteria. We can help you navigate the information out there.

Q. How much time will I study in the Sixth Form?

A. You should expect to have an average of seven/eight hours taught or tutored time for your main subjects, per cycle. You can expect to have up to four sessions of directed study time, per subject, per cycle.

Q. Does advertising a course in the prospectus mean it will definitely run?

A. Not always. If a course does not recruit sufficient numbers then we may run the course with fewer lessons, or we may have to cancel the course in some circumstances.

Q. What BTEC and Cambridge Technical courses will be offered?

A. At Level 3 - Business, Sport Studies, Applied Science, Psychology and Law.

Q. What if I don't do well at GCSE?

A. We also offer a Level 2 Customer Services course with work experience and a foundation learner course. We also have Maths and English re-sit classes.



WE'VE GOT YOUR BACK

The support system that we operate will enable you to reach your full academic potential. It is designed to motivate you by giving you extra guidance and targeted support. This support is for all students. Our aim is to help everyone fulfil their ambitions, regardless of starting point.

Monitoring takes place three times per year in the Sixth Form and, after each round, the Sixth Form team will let you know you are on track for meeting your targets.

If you need support teachers of the relevant subjects will be informed and your parents will

be notified by letter. We aim to open up a three-way discussion between you, home and school to provide the most appropriate support to best meet your needs.

We offer great academic and pastoral support for student in our Sixth Form. Support will be ongoing until your monitoring grades improve. For some students, this may happen quickly; for others, the support may be ongoing for a longer period of time.

ULTIMATELY WE WANT YOU TO SUCCEED!

Expert Careers Advice

Careers advice can be booked via Mrs Mackle in the Careers and Employability point.

16 – 19 Bursary

A limited amount of funding is available to help any student who may face financial barriers to participating in Sixth Form studies. The threshold for eligibility at a household income of less than £26,000. Agreed standards of behaviour and attendance must also be met. For more information and an application form, please contact Ms Bracken in the Sixth Form Office.





BIOLOGY

What will I study?

You will explore biology in a hands-on way and discover how all living creatures interact in an ecosystem. You will cover topics exploring how cells, DNA and gametes make us what we are, to the structure and function of the heart. The course is delivered by experienced staff who have a real passion for the subject and want to ensure that you succeed.

What do students do afterwards?

You might choose to move on to study a related science degree at university, with a view to securing a job in medicine, child care or research, among others. Other former students have pursued careers in nursing, dentistry and biochemistry, as well as more diverse careers like accountancy.

How will I be assessed?

100% exam at the end of the course.

What can I do to prepare?

Talk to your peers and relatives who have studied biology at Whitby School recently, or come and speak to any of the science team - we are happy to help.





BUSINESS

Do you have the drive and ambition to manage a business, or ooze enthusiasm to become an entrepreneur? Are you creative enough to market worldwide products or organised enough to manage a business's finances? If so, then a course in business may be the right option for you. A business course at Whitby School will guide you to understand the ins and outs of businesses, exploring how different factors can test a business and push them to succeed. You will create a marketing campaign for a large business of your choice that someday may become a reality, and work with worldwide companies to investigate their finances. The units that you will cover are the core to any successful business and, one day, you could be the successful business that students are investigating. This course encourages independent learning, and with one-to-one support, passionate teachers and real business scenarios, you will develop the skills and knowledge to become successful in any workplace.

What do students do afterwards?

Many business students guarantee themselves a place at university by studying a business course. A Level 3 qualification in business is recognised in most universities. If university is not the place for you then there is always the option of a higher apprenticeship.

BTEC business students have, in the past, landed themselves an apprenticeship in top businesses, such as GCHQ and Anglo American, and more and more businesses are taking on apprentices who have a business background.

How will I be assessed?

Units 1 and 8 – internally assessed (coursework);
Unit 2 and 3 – externally assessed (exam)





CHEMISTRY

What will I study?

I wanted to start this section with a joke, but all the good ones Argon! If you sniggered to yourself, then you are the candidate for us. Chemistry is the science of materials, from the simple covalent molecules in the air to the oil-derived polymers in your phones and tablets - we cover it all. You will supplement your learning with a rigorous series of practical investigations, leaving you ready for a future career in science - or any other vocation where being methodical and organised is important.

What do students do afterwards?

In recent years, our students have taken places at top universities to study medicine, veterinary, engineering, as well as chemistry and material science courses. An A-level in chemistry is well regarded by employers too, as it shows you have the commitment to succeed on a challenging course, and a great capacity to learn.

How will I be assessed?

100% exam at the end of the course.

What can I do to prepare?

Talk to other students who are already doing chemistry. If you currently study combined science, it's not a problem, it's been done many times before. If you are worried about it, get in touch with the science department.





DRAMA

What will I study?

This course builds on the skills and experience gained at GCSE aiming to make you both a better performer and also a more critical thinker. By the end of the course you will have been exposed to a number of different performance styles and be able to discuss your own performance in a reflective manner as well as analyse the dramatic intentions of established playwrights and practitioners.

Units of study

Component 1 - Students participate in the creation, development and performance of one reinterpretation of an extract from a text, using the working methods and techniques of either an influential theatre practitioner or a recognised theatre company. Students must produce a realisation of the performance or design and a creative log.

Component 2 - Learners participate in the creation, development and performance of:

- one devised piece using the working methods and techniques of a different influential theatre practitioner or recognised theatre company
- one extract from a text in a different style to the devised performance. Learners must realise their performance live for the visiting examiner. Learners choosing design must also give a 5 to 10 minute presentation of their design to the examiner.

Learners produce a process and evaluation report within one week of completion of the practical work.

Learners explore:

- two complete performance texts from different historical periods
- one extract from a third contrasting text.

In Components 1 and 2 learners are given the opportunity to develop performing and/or design skills as appropriate to their interests and the facilities available in the centre. Learners must choose one or two skills from the following list:

- performing
- sound design
- lighting design
- set design (including props)
- costume design (including hair and makeup).

How will I be assessed:

Component 1: Theatre Workshop - 20% (Non-exam: internally assessed)

Component 2: Text in Action - 40% (Non-exam: externally assessed by visiting examiner)

Component 3: Text in Performance - 40% (Written examination: 2 hours and 30 minutes)

What do students do afterwards?

Drama can help you gain success in many different professions: actor, broadcaster, politician, teacher, producer, director, creative writer, scriptwriter, stage manager, lighting designer, prop master, set designer and so much more. A Drama qualification means that you can self-manage; keep to time deadlines; work as part of a group; are creative confident and passionate – skills that would benefit you in any job.



ENGLISH LANGUAGE

What will I study?

English Language students learn how our language works, as well as the power behind those words. Students will consider the impact of gender, age, technology and geography upon our language. You'll never listen to rap lyrics or a Donald Trump speech in quite the same way again! Our students also write creatively, producing their own original writing for coursework. So if writing blogs, stories or articles is something you are interested in, English Language is for you.

What do students do afterwards?

Our students leave with an outstanding understanding of how and why humans communicate in the way we do, giving them routes into a range of careers including the media and journalism, as well as psychology, sociology and nursing. English Language is about communicating with others and some of our alumni now work within the arts such as the fashion brand Lulelemon, teaching dance in Dubai and working as journalists for Sky and Channel 4. The ability to use and understand language can take you anywhere!

How will I be assessed?

80% exam; 20% coursework.

What can I do to prepare?

Talk to other students who are already doing the course and ask them what they have done or wish they had done. Read widely; anything that takes your fancy and inspires you to think and discuss.





ENGLISH LITERATURE

What will I study?

Words matter. Wars are started over them. Great love affairs happen because of them. Studying English literature will give you the chance to read, think and discuss. In a world filled with 140 characters, Instagram and Snapchat, how often do you get the chance to fully absorb yourself in a good book? From Dracula to The Handmaid's Tale, A-level literature is about amazing novels, poems and plays. Through these great literary texts, students get to grips with a range of texts covering a range of important issues, helping them to think about the world around them and to question and consider everything. Our students are often creative writers, as well as enthusiastic readers and participate in a range of literary competitions. In addition, students will have access to a range of exciting theatre trips.

Literature that changes our world. Join us on the journey!

What do students do afterwards?

Last year, 100% of our students gained a grade C or above; 66% gained A/A* grades. Students have gone on to study English literature, history, psychology and media-based degrees. Some are enjoying careers in the media, such as SKY and Channel 4 and others are continuing their studies at top establishments such as Oxford University.

How will I be assessed?

80% exam; 20% coursework.

What can I do to prepare?

Talk to other students who are already doing the course and ask them what they have done or wish they had done.

Read widely; anything that takes your fancy and inspires you to think and discuss.





FINE ART

What will I study?

Are you able to see the beauty and emotion in the world around you? Do you enjoy drawing, sketching and photography? Do you love to experiment with new techniques and styles of art? If you decide to study art, you will build on the skills you have learned in art GCSE, as well as learn some new techniques and approaches. We have a range of equipment across the department for you to access such as a kiln for clay work, screen printing equipment, dark room and cameras, laser cutter, glass-fusing kiln and a 3D printer. You will also have your own base room and desk, to be able to work independently during your study periods. No need to book in or hot desk!

What do students do afterwards?

We have helped students study at some of the most prestigious universities in the UK, including Leeds, Chelsea, Glasgow, York and Falmouth. These students study a variety of disciplines in the art and design world, including art foundation studies, fine art, sculpture, film, illustration and photography. We have many students who have gone on to have successful careers in the competitive art and design world as textile artists, photographers and architects.

How will I be assessed?

60% personal investigation; 40% externally set task

What can I do to prepare?

Have a look at some of the work exhibited around Whitby School or ask your teacher to show you some of the work students have produced on their Year 12 and Year 13 fine art courses. Talk to some of our students too - they'll fill you in on what they enjoy most about the course.

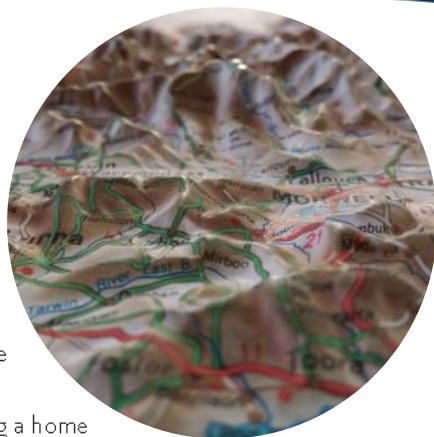




GEOGRAPHY

What will I study?

Geography is the eyes of the world - we see so many things in our daily lives and often appreciate our surroundings without understanding how interconnected our world is. A-level geography aims to allow us to see more clearly how our lives are affected by the environment and development of countries. Understanding the risk of buying a home near a river; of how quickly Hurricane Irma devastated the Caribbean and the aid needed to help, or to simply gaining an awareness that migration will continue and increase as our world moves towards ten billion people.



What do students do afterwards?

Geography at Whitby School teaches more than just A-level, we aim to give you the research skills to be successful at university, bridging the gap between your school and university education. The world in which we live is likely to change more in the next fifty years than it has ever done before. Geography explains why, and helps to prepare you for those changes. The transferable skills which geography fosters are an asset in the complex world of employment today. Geography is about the future and encourages flexible thinking across topics such as hazards, international development, coastal system and carbon cycles; geographical studies fosters these qualities and provides a firm basis for life-long learning. Geography involves the study of both natural and social sciences; it is seen as the 'bridge' between the sciences and the arts, leading to degrees in human or physical geography or geo-sciences, and employment ranging from marine biosphere conservation to town planner and tourism.



GRAPHIC COMMUNICATION

What will I study?

Do you have flair for visual language? Do you notice how colours, images and information work together? If you decide to study graphic communication you will develop your skills learned in art in sketching, photography and drawing, as well as learn how to use industry-used programs such as Photoshop and Illustrator. You will create imaginative and “real world” advertising, websites, packaging and more for anything from pet food, children’s books and charitable organisations, to sports brands and video games.

What do students do afterwards?

As well as a clear link into diplomas in graphic design, some of our students have gone on to study many disciplines in the art and design world including art foundation studies, illustration and photography. From our end of Y13 Pannett Gallery exhibition, some students have been approached to produce work in a freelance capacity, and to apply for apprenticeships. Many visitors who have seen our work comment on the professional outcome - a fact that has impressed tutors during university interviews too.

How will I be assessed?

60% personal investigation;
40% externally set task.

What can I do to prepare?

Have a look at some of the examples around the school or ask your teacher to show you some of the work students have produced in Year 12 and Year 13. Talk to some of our students too. They’ll fill you in on why they enjoy the course.





HEALTH & SOCIAL CARE

What will I study?

Have you always wanted to work with people? Does nursing or teaching interest you? Do you want to work in the biggest employment sector in the UK? Do you have good communication skills? Are you a caring individual? Do you get enjoyment from helping others? Health and social care is available as a single and double A-level equivalent, students study a wide range of topics, assessment depends on the topic studied.

Units of study

Coursework - Building positive relationships in health and social care; infection control; supporting people with learning disabilities; sexual health, reproduction and early development stages; the impact of long-term physiological conditions; living with dementia; caring for older people. Exam - Equality, diversity and rights in health and social care; health, safety and security in health and social care; anatomy and physiology for health and social care; Personalisation and person-centred approach to care; safeguarding.

What do students do afterwards?

Students have gone onto study a wide range of university courses, ranging from child nursing, midwifery, social work and psychology. 95% of our students go on to study at degree level.

How will I be assessed?

Assessment is a combination of written exams and coursework; 45% exam, 55% coursework.





HISTORY

What will I study?

History is packed full of the greatest characters you could ever wish to see on the TV or stage and they don't get any bigger than Henry VIII or more fascinating than the development of the American Dream after World War Two and the tensions which existed between civil rights and cold war priorities. Immerse yourself in the sixteenth century with the Tudors and use the cold war to help you to understand the state of the world today. All of the course is brand new learning and is accessible to anyone with a willingness to learn and a passion for the past!

What do students do afterwards?

In recent years, our A-level history students have gone on to study a wide variety of subjects including history (of course!), Egyptology, archaeology, teaching or any other degree course.

How will I be assessed?

80% exam at the end of the course, with 20% of coursework completed between Years 12 and 13.

What can I do to prepare?

Talk to other students who are already doing the course and ask them what they have done or wish they had done. Come and talk to one of the teachers who will be happy to discuss the content and style of learning in more depth. Send us an email if you can't come and see us. Read some history - any period; reading relevant books is always good preparation.





LAW

What will I study?

The titanic struggle between good and evil comes alive on the page when studying law. Well, sort of. Every aspect of our lives is governed by the government and the system of laws which exist and BTEC law will help you to understand this. If you enjoy legal programmes, police programmes or politics then this course will help you develop and understand.

What do students do afterwards?

BTEC law students have acquired apprenticeships with local law firms, gone on to study law in many universities around the country, or used the qualification to access courses such as physiotherapy, English, sport, primary teaching... The possibilities are endless.

How will I be assessed?

By both internal and external assessment. One exam in Year 12 and another in Year 13. The external exams are based on pre-released material while the assignments use materials covered in lessons.

What can I do to prepare?

Talk to other students who are already doing the course and ask them what they have done or wish they had done. Come and talk to one of the teachers who will be happy to discuss the content and style of learning in more depth. Watch some cracking TV programmes like 'How to get away with Murder', 'Suits' or 'The Night of!'





MATHS

What will I study?

Do you have a flair for algebra? Do graphs get your pulse racing? If so we can help you to become a proper mathematician. If you take maths at A-level, you will build on many GCSE topics such as surds, circle geometry and sequences, as well as meeting many new topics. You will also study applied maths content in statistics and mechanics. Details about the course content are on Gmaths28.wordpress.com on the information webpage.

What do students do afterwards?

In recent years, our A-level maths students have gone on to study a wide variety of subjects including maths, science and engineering. We've also had students entering degrees in law and business or apprenticeships. Maths A-level is really well regarded by universities and employers. See the display posters in the maths department for an idea of the variety of student destinations.

How will I be assessed?

100% by three written exam papers at the end of the course.

What can I do to prepare?

Talk to other students who are already doing the course and ask them what they have done or wish they had done. We will give you a full bridging programme when you finish your GCSEs and we can help you with any bits you are stuck on.





FURTHER MATHS

What will I study?

Students taking Further Mathematics overwhelmingly find it to be an enjoyable and rewarding experience. In fact they often say it's their favourite subject! For someone who enjoys mathematics, it provides a challenge and a chance to explore new and/or more sophisticated mathematical concepts. Students who take further mathematics find that the additional time spent studying mathematics boosts their marks in single A-level mathematics.

What do students do afterwards?

If you are planning to take a degree such as engineering, sciences, computing, finance/economics, etc, or perhaps mathematics itself, you will benefit enormously from taking further mathematics, at least to AS-level. AS further mathematics introduces new topics such as matrices and complex numbers that are vital in many science, technology, engineering and mathematics (STEM) degrees. Students who have studied further mathematics find the transition to such degrees far more straightforward.

How will I be assessed?

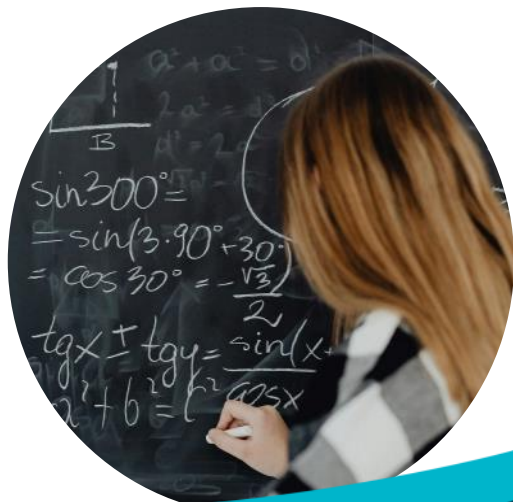
100% exam at the end of the course.

What can I do to prepare?

Talk to other students who are already doing the course and ask them what they have done or wish they had done.

Further reading

<https://successatschool.org/advice/details/186/Why-Study-Maths%3F>; <http://www.mathscareers.org.uk/> and <http://furthermaths.org.uk/>





MEDIA STUDIES

Why Media Studies?

From television to cinema, radio to podcasts, social media to blogs and vlogs, and everything in between – media studies explores what we encounter every day.

It's never been so relevant, in the internet age it is through media where we make our own mark, where people create an online presence, where we are persuaded to pay for goods and services, where we go for facts and entertainment.

An understanding of how Media works for us (or against us) are skills which have become more in demand all over the world.

Media studies will equip you with the communication skills needed to succeed in the modern workplace, whether in the media industry or not. Whether you choose to pursue a career in business, entertainment or journalism – you'll be well equipped for what the modern workplace is looking for.

What will I study?

This course will develop your analytical skills, as you learn to interpret the messages presented by the mass media. You will learn media language and analyse how it is used to create messages and meanings, looking at products for a range of audiences from different time periods. You will develop your creative and technical skills via the completion of production portfolios. You will also consider issues and debates surrounding the media and carry out investigations.

What do students do afterwards?

Students can progress to study degrees in media, English, sociology, graphic design, marketing, audio-visual technology, education and journalism.

Career opportunities:

Career opportunities include teaching, media production, journalism, graphic design, photography, audio-visual or broadcasting.



MODERN FOREIGN LANGUAGES

Why study a language at A-level?

Because although it is hard work, it's also fun! Learning a language in greater depth is very rewarding and can lead to fantastic opportunities in travel and cultural and social situations.

What will I study?

You can choose to learn the French or German language and discover its culture - from media, popular culture and social issues, to sport, leisure and family life, to science technology and the environment. You will also study a book or a film. Our specialist language teachers will support you to develop the skills you need to master your chosen language. There is also the possibility to travel to France or Germany as part of your course at Whitby School Sixth Form.

What do students do afterwards?

You can go on to study French/German at university and find work in teaching, translating, travel and tourism or any one of the many sectors in business. Employers in every industry value linguistic skills. So combining an A-level language with a subject such as business, law or history, to name a few, will give you much more choice when it comes to choosing your career.

How will I be assessed?

100% exam. In a language A-level you will develop your skills and be assessed in listening, speaking, reading and writing. You will become good at comprehension, essay writing, translating and summary skills.





MUSIC

What will I study?

Do you love singing or playing music? Do you enjoy writing your own songs or creating your own music? Do you enjoy listening to and discussing a wide range of music? Music A-level is the course for you to help to become a confident and creative musician. You will further develop your practical skills through the many performance opportunities we offer. You will also study and analyse a range of music, from symphonies to rock and pop.

What do students do afterwards?

The majority of our A-level music students have progressed onto music or arts based courses, at university or Conservatoires. We've also had students go on to study a range of other subjects, like maths and science. Music A-level is highly regarded by all universities as a subject that is rigorous, both academically and practically.

How will I be assessed?

30% performance (recital); 30% composition portfolio; 40% exam at the end of the course. Note: At A2, you can choose to specialise in performance (35%).

What can I do to prepare?

Get involved in as many musical activities as you can - bands, writing and listening to music. Talk to Mrs Beattie, Mrs Edmonds-Preedy or any of the peripatetic teachers or students who have taken the course.





PHYSICS

What will I study?

No computers, no internet, no smartphones. The digital age as we know it would not exist. Modern physicists have been responsible for some of the greatest achievements of our era. By studying A-level physics, you're setting out to understand and explain the entire universe! It's a pretty ambitious task, but one that physicists everywhere are constantly striving to achieve, from the smallest particles in existence to the great expanse of space.

Boys and girls - if you love science and are excited to enter the world of science, technology, engineering and mathematics, don't let anything put you off.

What do students do afterwards?

Why do our students study A-level physics? It could be for the income, the future prospects or the sheer intellectual stimulation.

Whatever your reasons, you can progress to university to study a degree in a STEM (Science, Technology, Engineering and Maths) subject. Physicists are highly regarded for their problem-solving skills in real life contexts. So, this qualification is extremely useful, even if you're planning to follow a different career path.

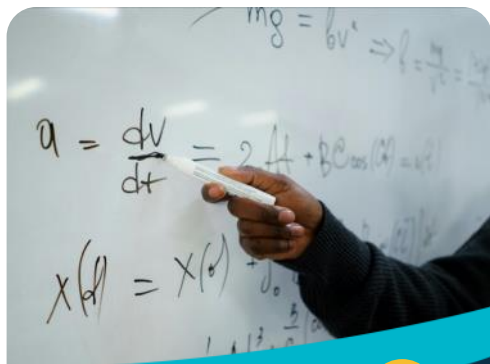
Students who have studied physics at this school have gone on to study and work in careers such as engineering, instrumentation, medicine, architecture, computer science, games design, architecture, healthcare, forensics, music technology and many more!

How will I be assessed?

100% exam at the end of the course.

What can I do to prepare?

Talk to other students who are already doing physics and ask them what they have done or wish they had done. Teachers in the Science Department are there to help you and give you information and advice.





PHILOSOPHY & ETHICS

What will I study?

Our A-level in Religious Studies: Ethics and Philosophy provides a coherent and thought-provoking programme of study. Students will develop their understanding and appreciation of religious beliefs and teachings, as well as the disciplines of ethics and the philosophy of religion. Be prepared to ask, explore and discuss lots of interesting questions.

What do students do afterwards?

Thinking philosophically requires rigour, precision and creativity; qualities that can then be applied to any other problem.

Careers where a study of this subject may be useful include:

- barrister
- civil service fast streamer
- health service manager
- doctor
- nurse
- local government officer
- marketing executive
- newspaper journalist
- psychotherapist
- recruitment consultant
- ...and many more!

How will I be assessed?

100% exam at the end of the course.

What can I do to prepare?

Talk to other students who are already doing the course and ask them what they have done or wish they had done. Watch programmes and documentaries that explore the questions we ask about the world as human beings. There are many books that you can also read - speak to members of staff to get a list of ideas for this.





PSYCHOLOGY

What will I study

Ever wondered if the experiences you had before the age of five really do shape the person you are today?

Or why some people conform?

Or why people become addicted to behaviours or substances?

Or how psychology is used in the world of advertising and criminal law?

BTEC Level 3 Applied Psychology will give you an understanding of the way people think and why people behave in certain ways.

What do students do afterwards?

The qualification carries UCAS points and is recognised by higher education providers as contributing to admission requirements to many relevant applied psychology courses. When combined with other qualifications such as A-levels or another BTEC Level 3 you can progress into higher education, studying such as a:

- BSc (Hons) in Occupational Health
- BSc in Education and Child Psychology
- BSc (Hons) in Sport Psychology
- BSc in Forensic and Criminal Psychology

How Will I be Assessed

“Psychology expands your horizons and makes you a better, well rounded person.”;

58% of the course is externally assessed by means of written examination. The remaining 48% is assignment based

What Can I do to prepare?

Read the key studies that underpin the course. These are experiments and research that have been carried out by psychologists in the past. Take an interest in the world and behaviour of people around you and develop an enquiring, open mind-set! Talk to students on the course this year or speak to the teacher.



SOCIOLOGY

What will I study?

Do you want to learn about how society functions? Why do men tend to earn more money than women? Why has Britain got a higher rate of teenage pregnancy than other European Countries? Are we free or do we follow the crowd? How does the society you live in affect your life? If you think these are all interesting questions then sociology, which is the study of society, might be the course for you.

Units of study within sociology are:

Families and households

Education

Research methods

Crime and deviance

The Media

Theory and methods.

What do students do afterwards?

Sociology students are prepared for entry level positions in health services, non-profit organizations, law, criminal justice, and human resources. Sociology is also excellent preparation for law school and for graduate study, not just in sociology, but also fields such as public health, criminology, public policy, business, public health, social work and education. One sociology graduate even became President of the United States!

How will I be assessed?

100% exam at the end of the course comprising three exams of two hours each.

What can I do to prepare?

Watch the news, watch films watch people within your society. Ask yourself why do people react the way they do, what makes people who they are.

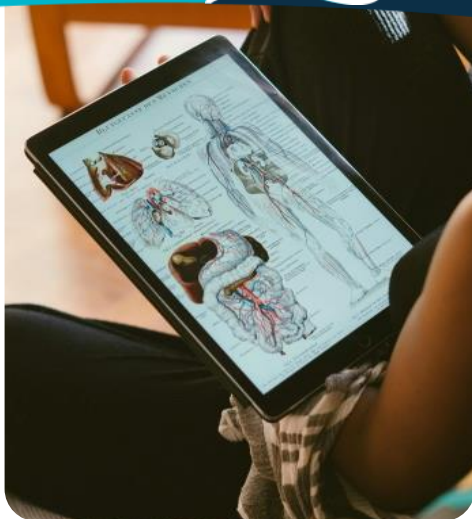




SPORT

What will I study?

Are you fascinated by how the human body works? Have you ever wondered why some people can run faster, jump further or develop muscles easier than others or how the mind can influence sports performance? If you have a passion and genuine interest for sport and exercise we can set you on a path to a career in the ever expanding sport, exercise or leisure industry. Or you can study Sport as a Diploma and take 14 units in total which is the equivalent of two courses.



What do students do afterwards?

Supports progression to higher education and employment when combined with other level 3 qualifications. Students have taken the opportunity to continue their studies in sports science, PE teaching, leisure, sport psychology and physiotherapy. Students wishing to pursue a career in the Armed Services, Police, Sports Coaching or the leisure industry will find the qualification really useful.

How will I be assessed?

Nine Units to complete: six are assessed internally through assignment-based work; three are set and marked externally.

What can I do to prepare?

Take a keen interest in a range of sports and exercise matters; follow related news and apps to keep abreast of what's happening the world of sport, exercise and leisure. Play sport on a regular basis and keep fit. Try to understand why things happen eg, the purpose of tactics or the benefits/adaptations to the body from exercise.



BUSINESS, ENTERPRISE AND CUSTOMER SERVICES (LEVEL 1)

What will I study?

You will develop the skills to be an effective customer service deliverer. Alongside your studies, you will complete compulsory work experience that will enable you to gain first hand skills and experience in a customer service environment.

The course has been developed in consultation with employers in the customer service sector to ensure it enables learners to acquire the skills and behaviour that will give them the best opportunity to be successful when applying for work.

GCSE maths, English and science if needed will give you the all important five good GCSE passes.

What do students do afterwards?

There are many opportunities for you to go after completing this course that include apprenticeships around customer service or moving onto a level 3 course.

How will I be assessed?

Unit 1 – Exam; Unit 2, unit 3 and unit 4 – Coursework

What can I do to prepare?

If you already have a job, you can start to examine what makes an excellent customer service deliverer and how you would best meet the needs of the different types of customers. You may also want to think about how your needs are met when you purchase products or services from a business.





HAIRDRESSING

Hairdressing - Level 2 Certificate For Hair Colouring Services

Learn how to mix and apply colour using the in salon techniques

What will the course involve?

You will cover the range of essential practical skills and knowledge which will help you get a job in a salon as a Junior Colourist.

- communication and advising clients and safe working in the salon
- colouring and lightening hair – semi, quasi and permanent, toners, lighteners
- colouring to achieve a variety of looks
- types and classifications of hair and the structure of hair
- perming and neutralising
- styling and finishing – creating volume and movement, rollering, spiral curling, setting.

Entry requirements

You must have a keen interest in the industry, want to work with people and have excellent attendance. You must meet deadlines and be committed to your course.

GCSE maths and English grade 4+ is preferred. If you do not hold a 4 or better in English and/or maths you will be required to study these further as this is part of the course.

You must attend a work experience placement each week, you will take part in enrichment

activities including competitions and additional courses.

Equipment

You will need a kit and uniform which we will explain at interview. If you are worried about paying towards a kit and uniform please talk to us and we can see if you can get a bursary.

Assessment

Practical assessment on clients in our training salons and questions in class.

You will complete some assignments and may need to work towards Functional Skills or GCSE. You will take an end of year exam.

General comments

You will need to ask friends and family to come in so that you can practice and do practical assessments. We will invite you to taster sessions and give you an advice and guidance interview before you start the course to make sure this is the correct route for you and allocate any support.

What will the course lead to?

You could progress onto a Level 3 apprenticeship or you may wish to do barbering or beauty therapy. Another option is to work on cruise liners or further qualifications could lead to teaching/ assessing and onto a degree.



FOUNDATION LEARNING PROGRAMME

What will I study?

Subjects include English, mathematics, physical education, life skills, ICT, Art, work experience, work experience accredited qualifications, cooking and gardening.

The course consists of three days a week in Whitby School Sixth Form. The other two days students will take part in a work experience placement. Previous work experience placements have included construction, motor mechanics, catering, retail, care, childcare and agriculture.

What do students do afterwards?

Progression after this course is individual to the student. At the end of the course there are a range of further education options and many students continue at Whitby School Sixth Form on the foundation learning programme until ready to progress further. There are options to move towards Level 2 programmes of study when ready.

How will I be assessed?

These include functional skills qualifications in mathematics and English. The work experience accredited qualifications reflect the skills gained in the workplace and in lessons, the other qualifications are based on school work.

Assessment includes a range of methods –examination, online computer tests, and workbooks.

What can I do to prepare?

Talk to other students about their experiences of the foundation learning programme. You can speak with friends and family about our different offers. Come and try a day for yourself.





EXTENDED PROJECT QUALIFICATION

“What is EPQ?”

An independent piece of work which is mainly self-guided. You produce a research-based essay. Complete a log and give a presentation at the end. Some taught skills sessions plus one-to-one supervisor meetings. A topic of your choice (you don't have to know what you want to do to start this course!)

The Benefits of the EPQ

The EPQ will help you to demonstrate to both Universities and future employers that you are able to work independently. It will also help you to develop essential skills required for study at a higher level:

- working with others
- working to deadlines
- planning and management of a project
- decision making and problem solving
- presentation skills
- communication skills.

The skills that you develop through the EPQ are excellent preparation for university-level study.

Students can refer to the EPQ in their UCAS personal statements and interview to demonstrate some of the qualities that universities are looking for.

Another benefit of the EPQ is you don't have to revise and prepare for an exam but it will give you the same UCAS tariff as an AS exam. It can also help to further your knowledge in one or more of your examination subjects and enrich your performance in that exam.

Topics previously studied

Is it possible to eradicate fears?

Are the younger generation to blame for the extinction of traditional rural crafts?

The most influential design aspect of the international America's Cup Class 72 for the best velocity.

The 1950's – Britain's most iconic fashion decade.

What is the most effective poison to kill my brother?

Is it justified to sacrifice liberty for security?

Can solar weather be predicted?





Whitby School
Ad finem terrae